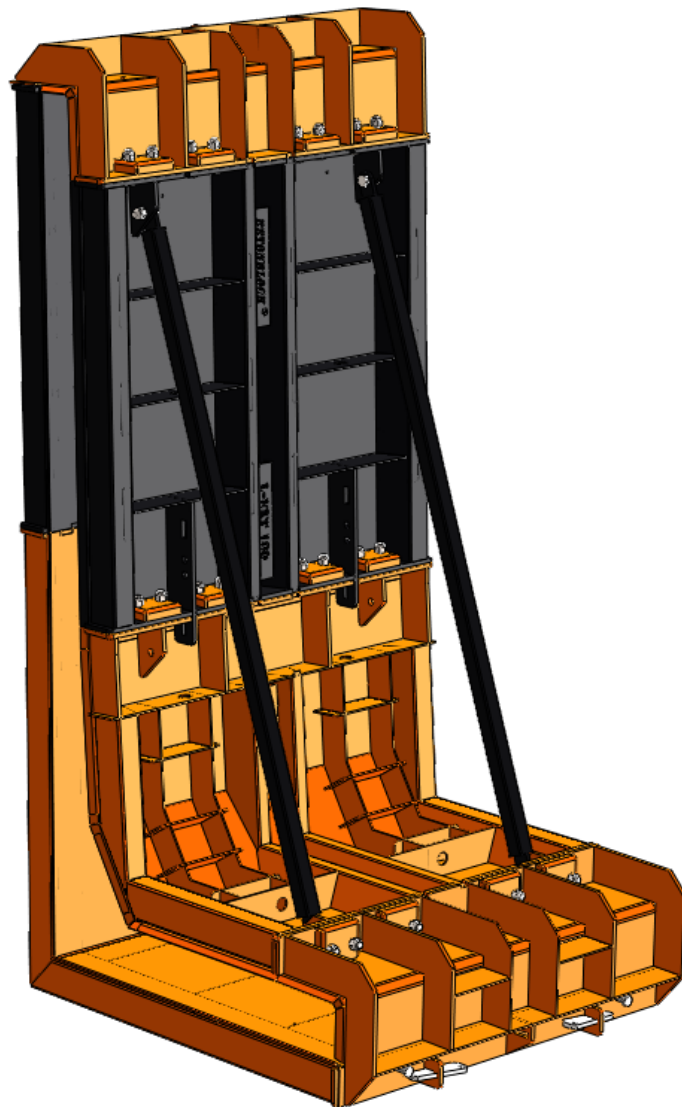




USER MANUAL

ASSEMBLING OF STEEL MOLD FOR CASTING THE CONCRETE BLOCK L200x95x100

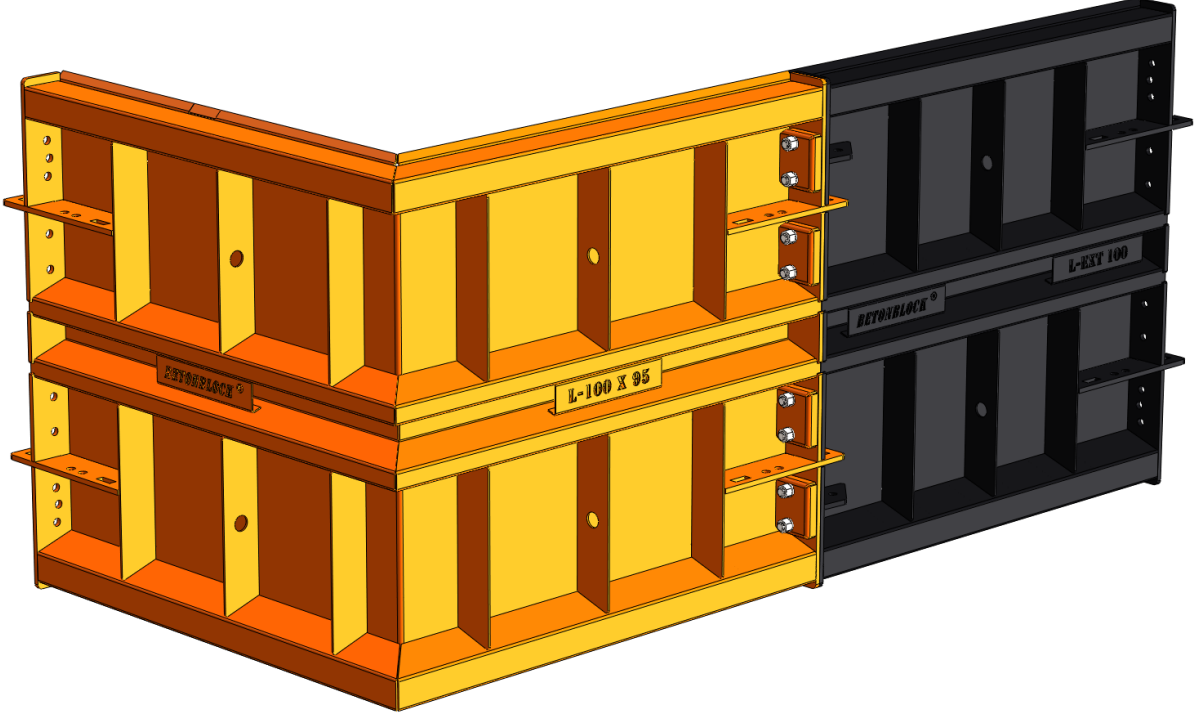


PARTS AND QUANTITIES:

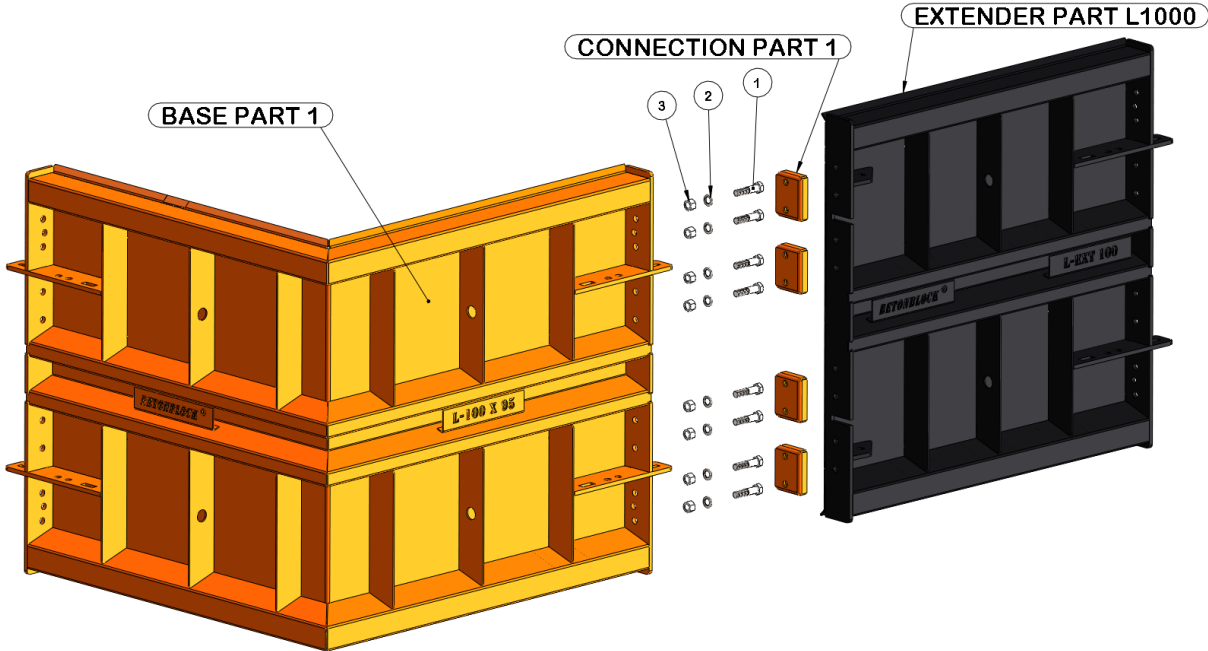
	<p>BASE PART 1</p> <ul style="list-style-type: none"> - 1 pcs in assembled mold
	<p>BASE PART 2</p> <ul style="list-style-type: none"> - 1 pcs in assembled mold
	<p>BASE PART 3</p> <ul style="list-style-type: none"> - 1 pcs in assembled mold
	<p>BASE PART 4</p> <ul style="list-style-type: none"> - 1 pcs in assembled mold
	<p>EXTENDER PART L1000</p> <ul style="list-style-type: none"> - 2 pcs in assembled mold
	<p>CROSSBAR PART FOR EXTENDER L1000</p> <ul style="list-style-type: none"> - 2 pcs in assembled mold
	<p>CONNECTION PART 1</p> <ul style="list-style-type: none"> - 16 pcs in assembled mold
	<ul style="list-style-type: none"> - WEDGE – 4 pcs in assembled mold - CONIC PIN – 4 pcs in assembled mold
	<ul style="list-style-type: none"> - BOLT M16x70, DIN 931, 8.8 – 32pcs - SPRING WASHER DIN 127B, M16 -36pcs - NUT M16, DIN 934, 8 – 36 pcs

- BOLT M16x50, DIN 933, 8.8 – 4 pcs

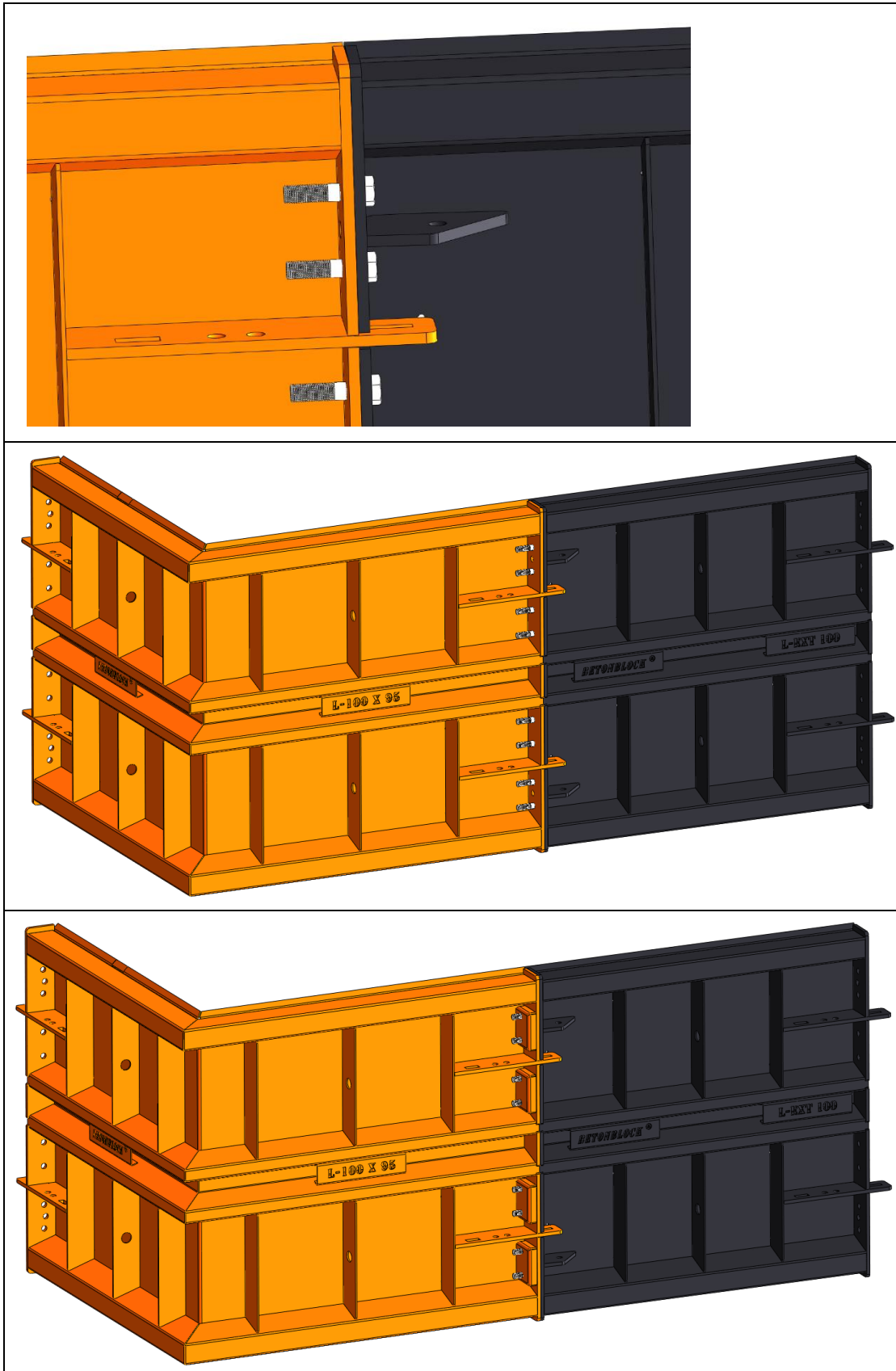
STEP 1: ASSEMBLING THE STEEL MOLD HALF 1:

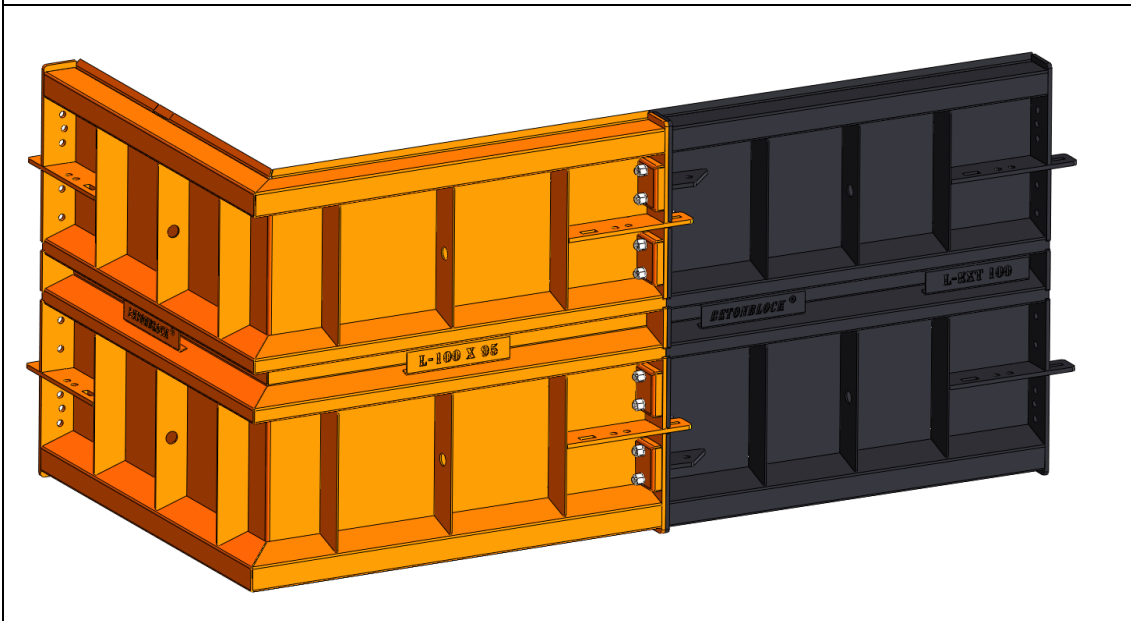
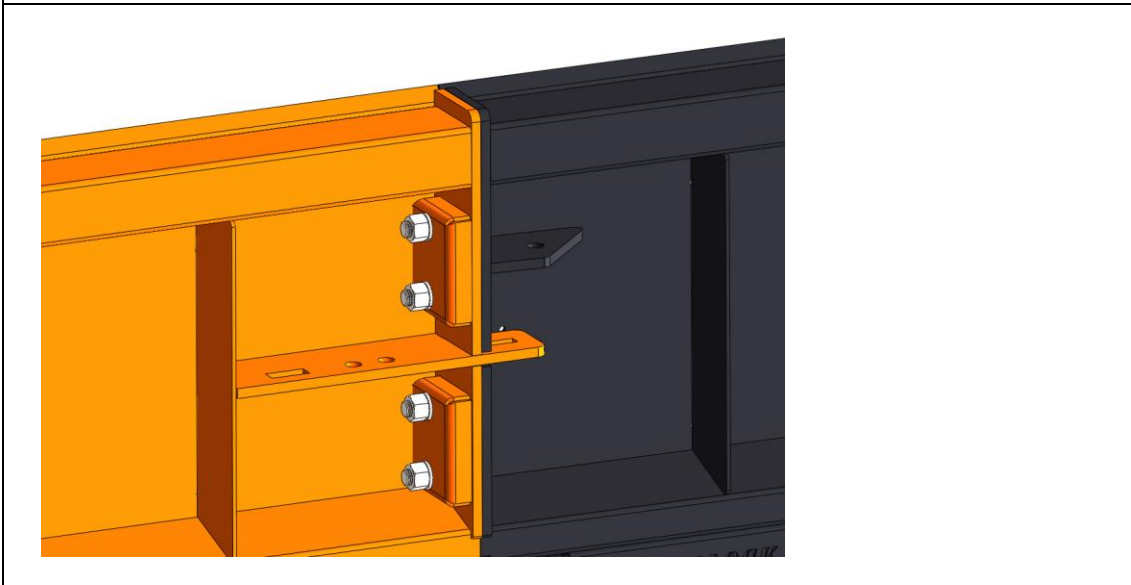
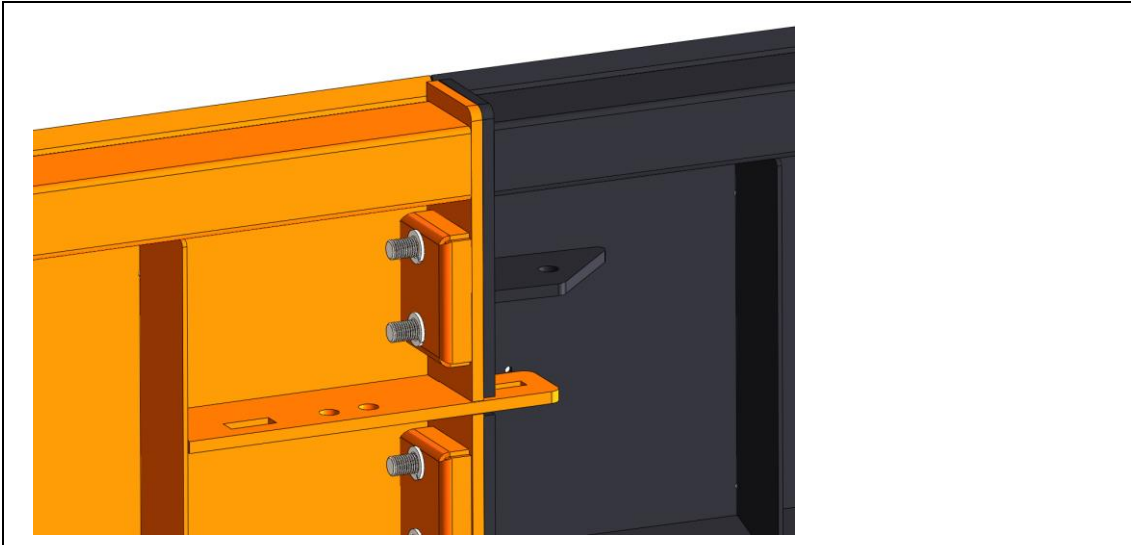


Following parts are used for assembling the STEEL MOLD HALF 1:

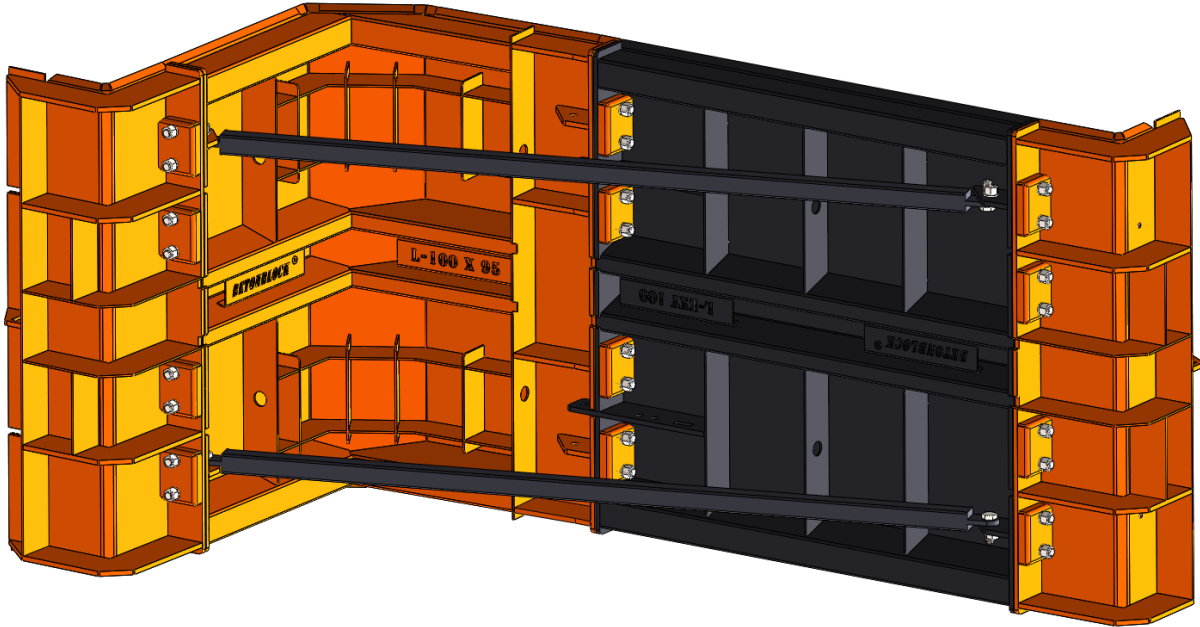


Align the BASE PART 1 and EXTENDER PART L1000 and put bolts (pos.1), CONNECTION PART 1, washers. Screw the nuts by hand to the end.

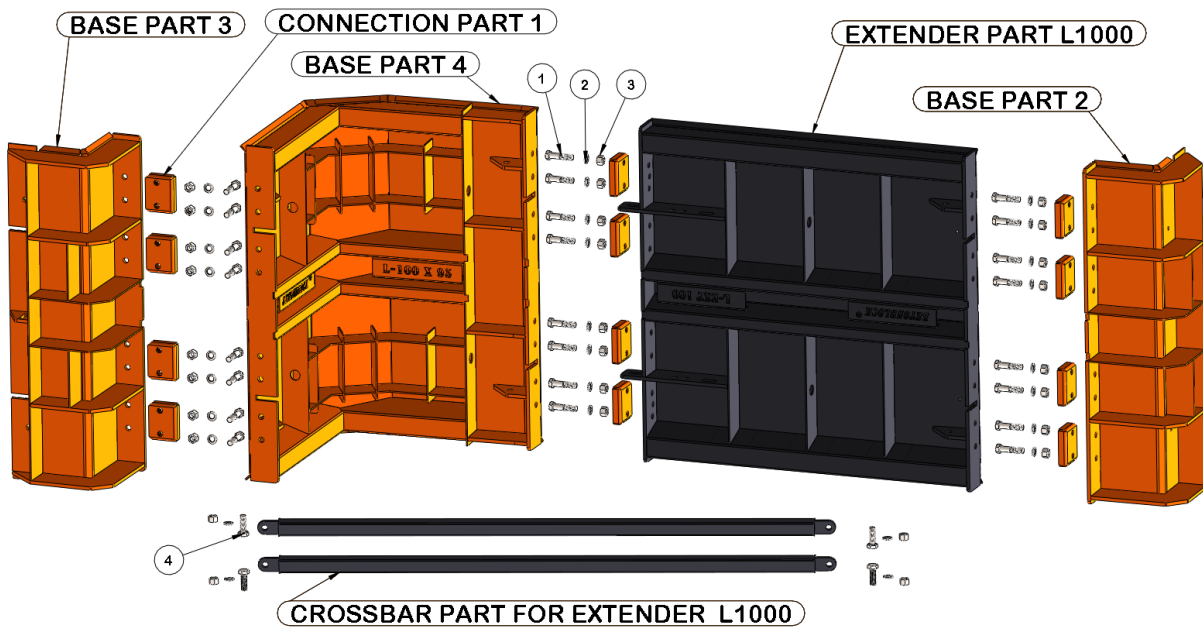




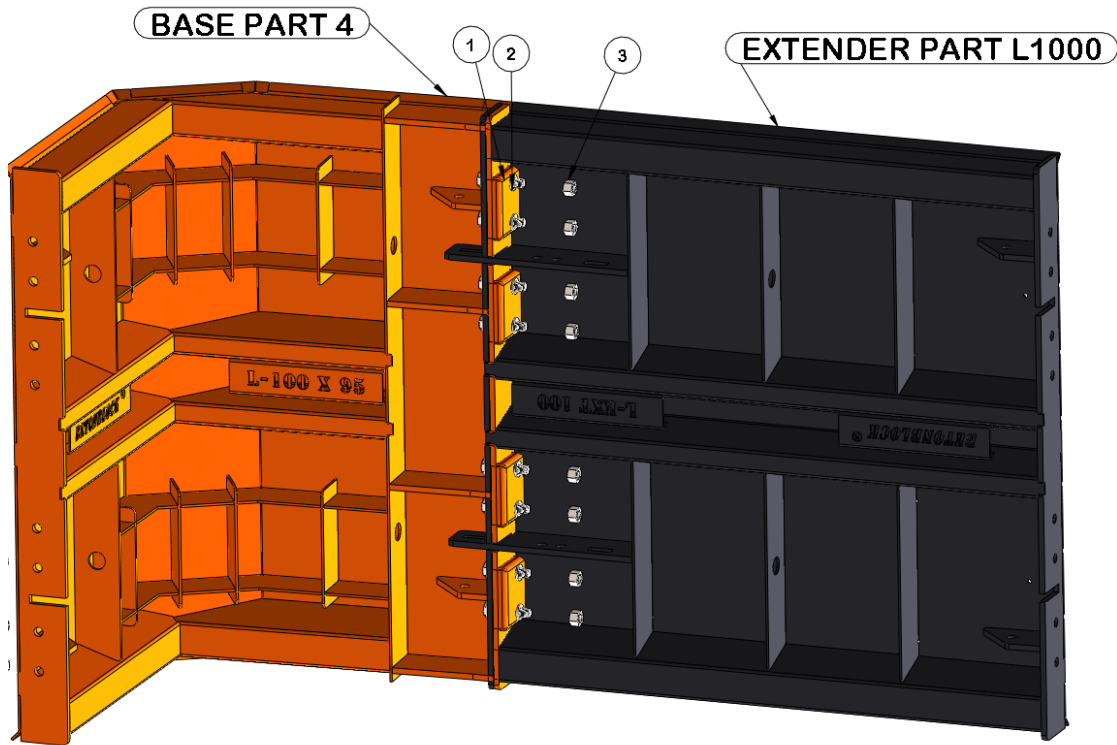
STEP 2: ASSEMBLING THE STEEL MOLD HALF 2:



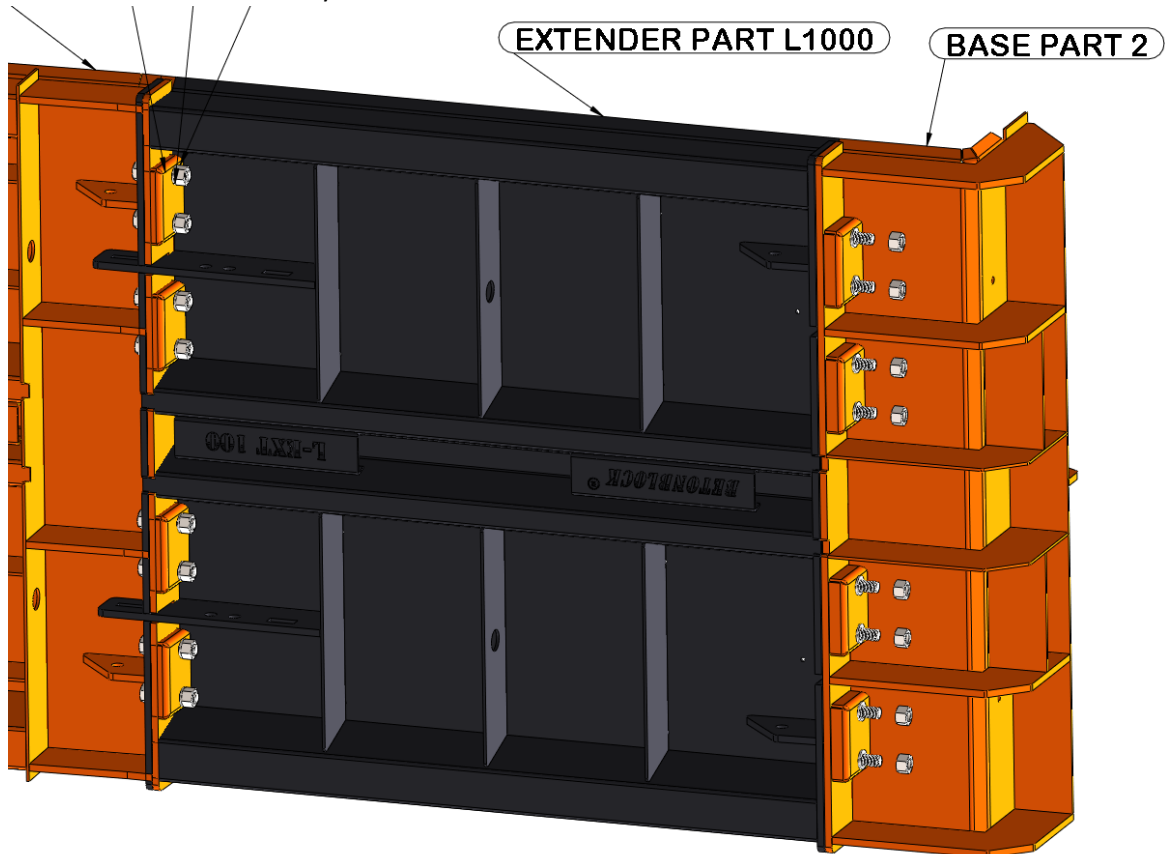
Following parts are used for assembling the STEEL MOLD HALF 2:



Align the BASE PART 4 and EXTENDER PART L1000 and put bolts (pos.1), CONNECTION PART 1, washers. Screw the nuts by hand to the end.

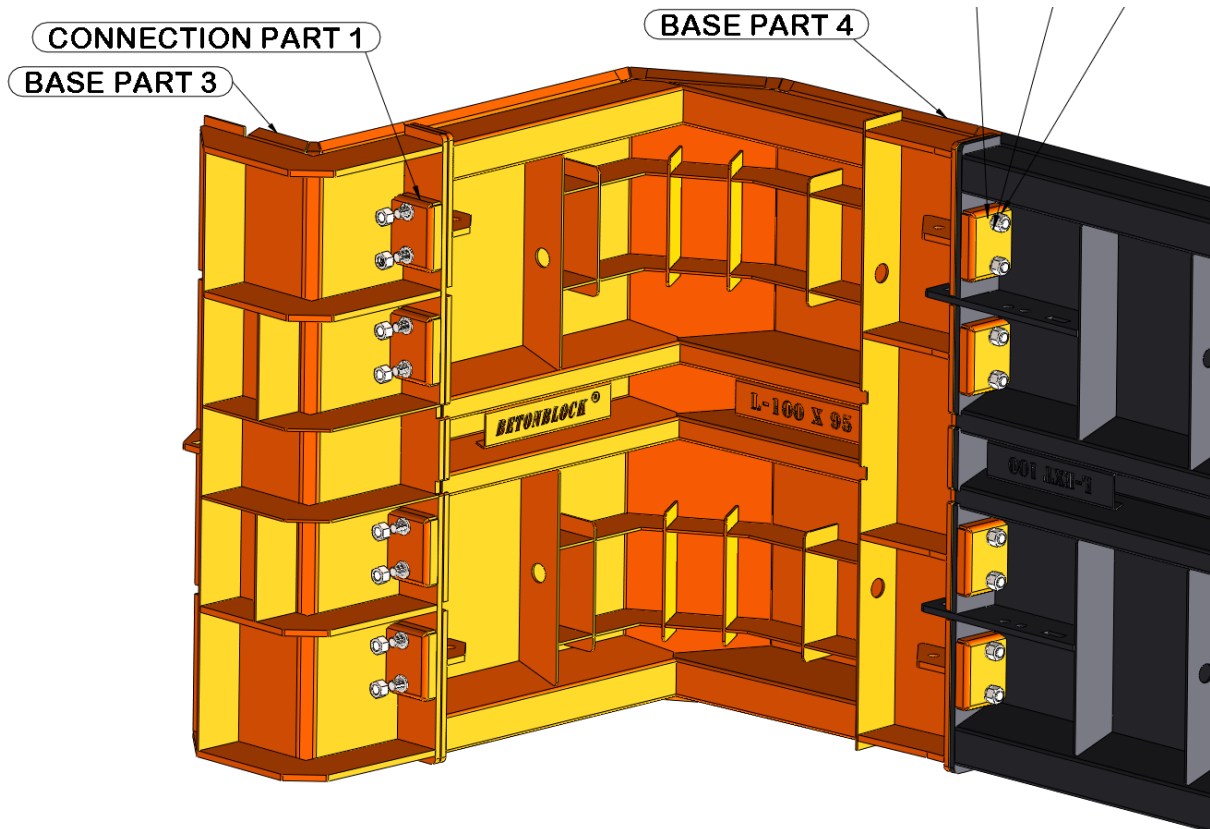


Align the BASE PART 2 to EXTENDER PART L1000 and put bolts (pos.1), CONNECTION PART 1, washers. Screw the nuts by hand to the end.

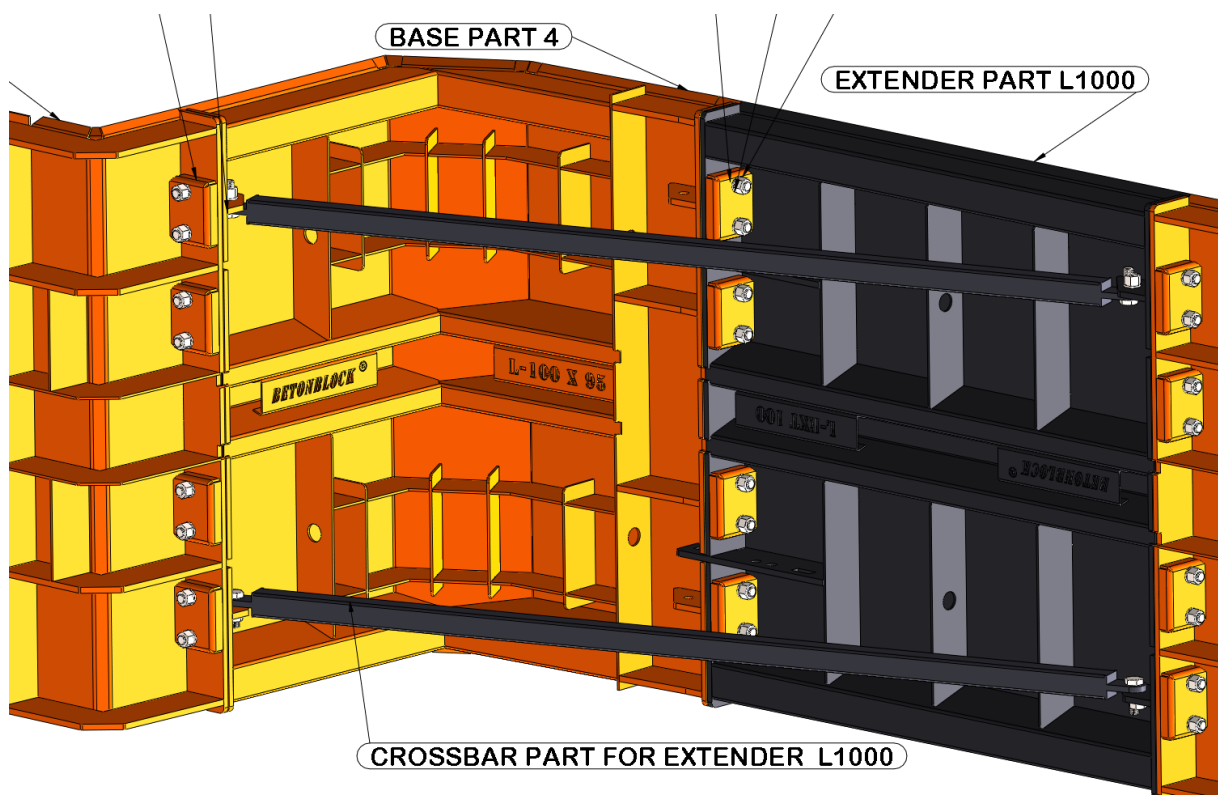




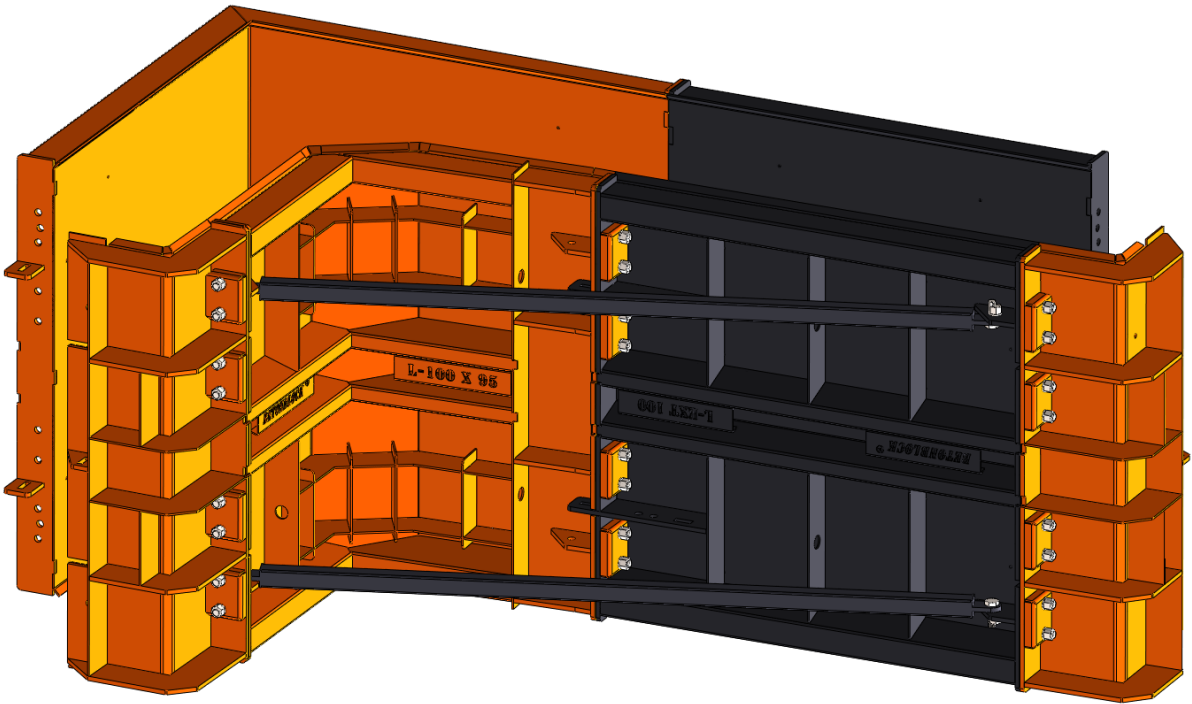
Align the BASE PART 3 to BASE PART 4 and put bolts (pos.1), CONNECTION PART 1, washers. Screw the nuts by hand to the end.



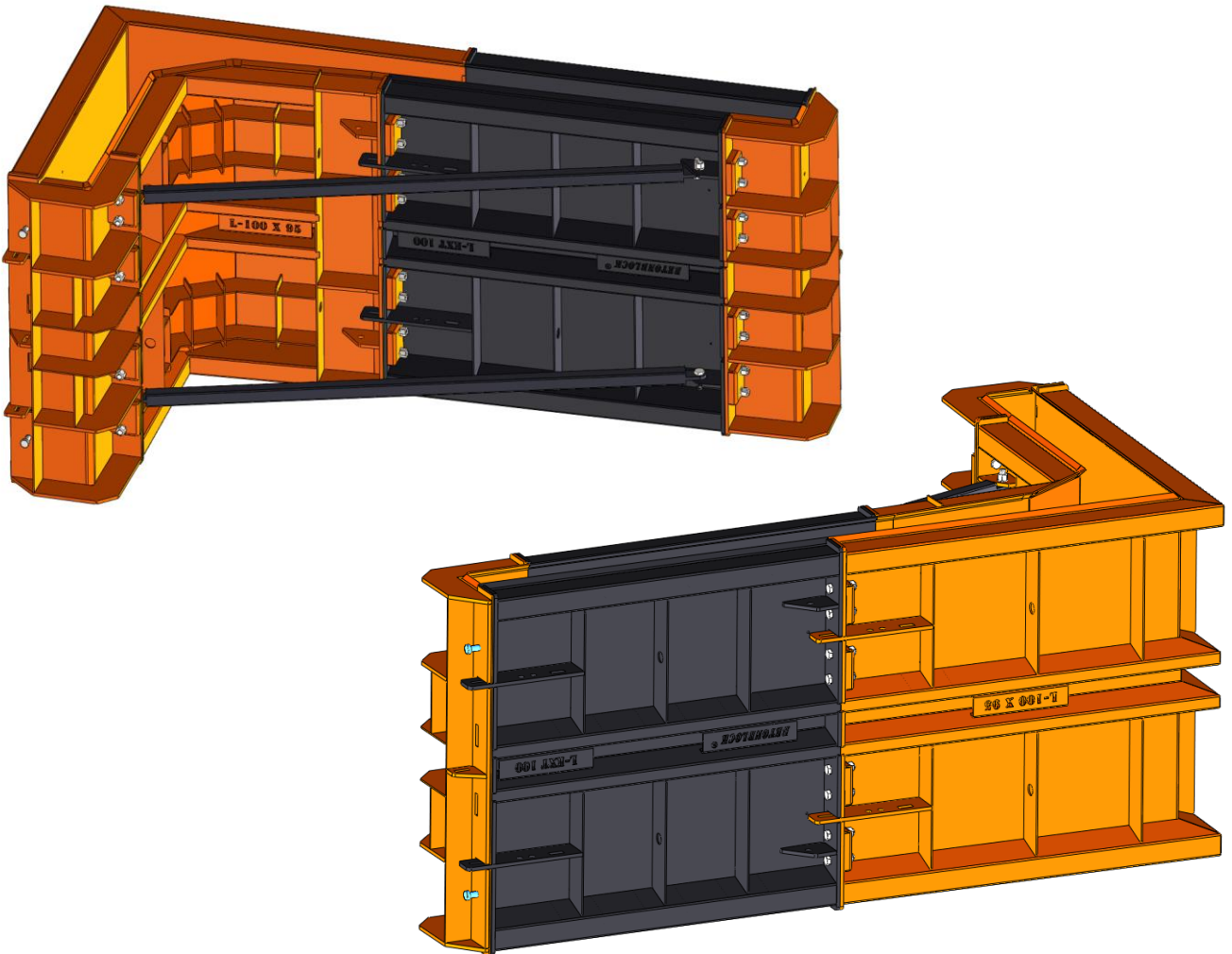
Attach the CROSSBAR PART FOR EXTENDER L1000 to already assembled BASE PART 4 and EXTENDER PART L1000 bolts (pos.4), washers and screw the nuts by hand to the end.



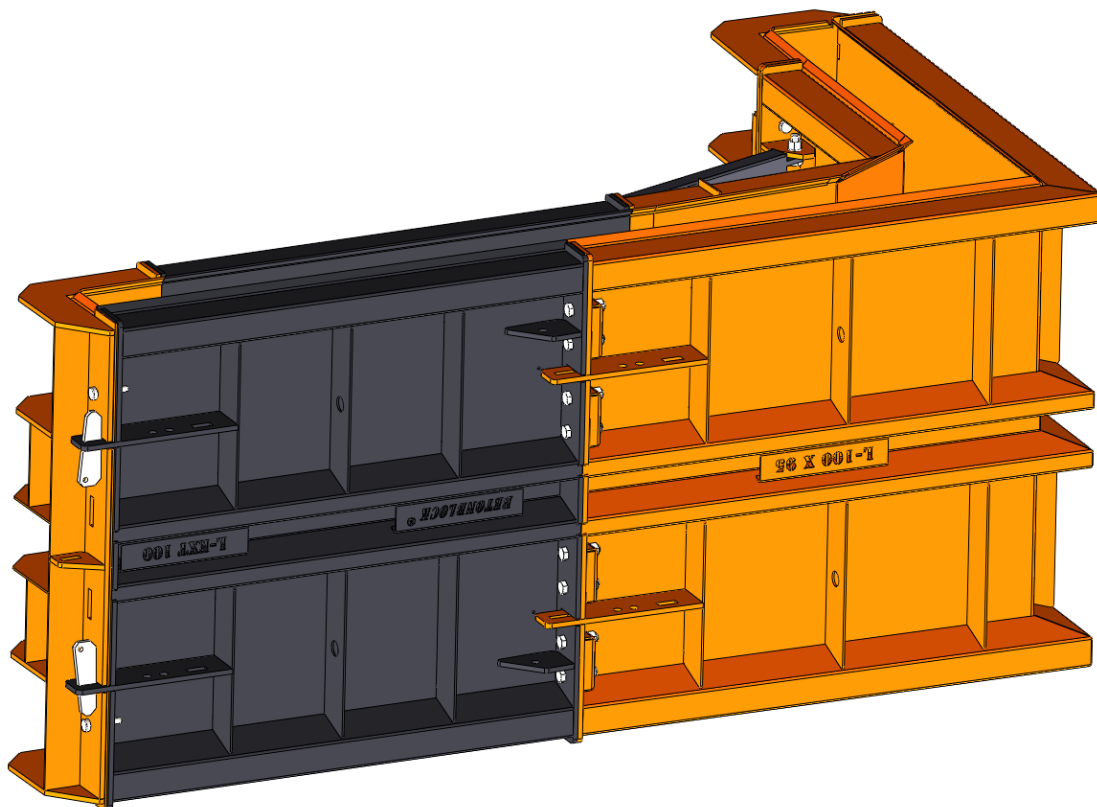
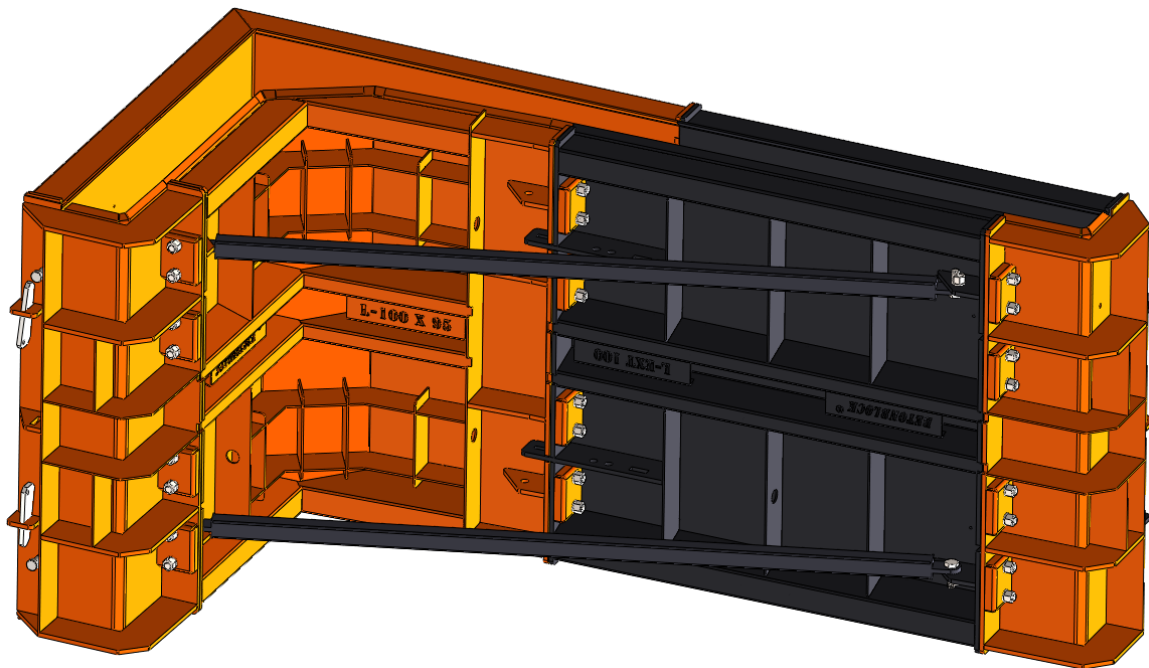
STEP 3: Assembling the two half of the mold.



Align the two half of mold and put the CONIC PIN to guide them to final position.



Put the 4 wedges in position and with hammer hit the wedges and conic pins to completely close the mold.



Tighten all bolts and nuts securely with a wrench.

The mold is ready for use.